

MK	TYPE	SIZE	MATERIAL	GLAZING	OPTIONS
11	EXTERIOR	3'-0" x 6'-8"	FIBERGLASS	LOW E	NO GRILLS
12	INTERIOR	2'-0" x 6'-8"	SMOOTH	N/A	SOLID CORE
13	INTERIOR	2'-0" x 6'-8"	SMOOTH	N/A	SOLID CORE
14	BH-FOLD	4'-0" x 6'-8"	WOOD LOUVERED	N/A	
15	FRENCH EXT	(2) 2'-8" x 6'-8"	FIBERGLASS	LOW E	
16	INTERIOR	2'-4" x 6'-8"	SMOOTH	N/A	SOLID CORE
17	BH-FOLD	5'-0" x 6'-8"	WOOD LOUVERED	N/A	
18	BH-FOLD	3'-0" x 6'-8"	WOOD LOUVERED	N/A	
19	POCKET	2'-0" x 6'-8"	SMOOTH	N/A	SOLID CORE
20	BH-FOLD	6'-0" x 6'-8"	WOOD LOUVERED	N/A	
21	INTERIOR	1'-6" x 6'-8"	SMOOTH	N/A	SOLID CORE
22	EXTERIOR PATIO	2'-8" x 6'-8"	FIBERGLASS	CLEAR IG	NO GRILLS
23	EXTERIOR	2'-0" x 6'-8"	FIBERGLASS	N/A	
24	FRENCH EXT	(2) 2'-8" x 6'-8"	FIBERGLASS	CLEAR IG	
25	EXTERIOR	3'-0" x 6'-8"	FIBERGLASS	CLEAR IG	NO GRILLS
26	BY-PASS	5'-0" x 6'-8"	SMOOTH	N/A	SOLID CORE
27	INTERIOR	2'-0" x 6'-8"	SOLID CORE BRCH	N/A	WEATHER STRIPPED WITH SWEEP, THRESHOLD & KEY LOCK
28	INTERIOR	3'-0" x 6'-8"	SOLID CORE BRCH	N/A	
29	EXTERIOR PATIO	2'-8" x 6'-8"	FIBERGLASS	LOW E	NO GRILLS

ALL EXTERIOR FIRST FLOOR DOORS WILL HAVE LOW PROFILE THRESHOLDS.

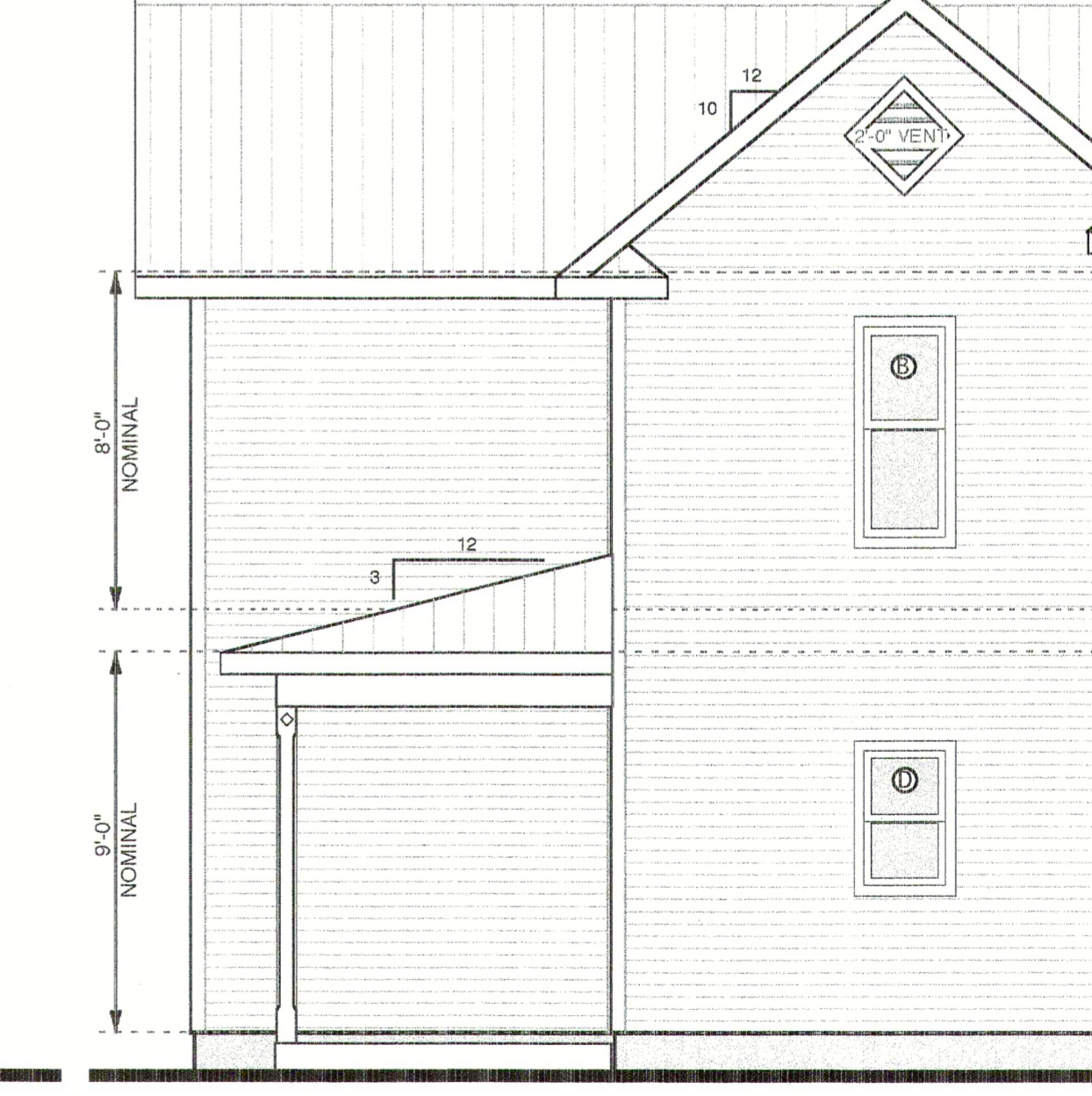
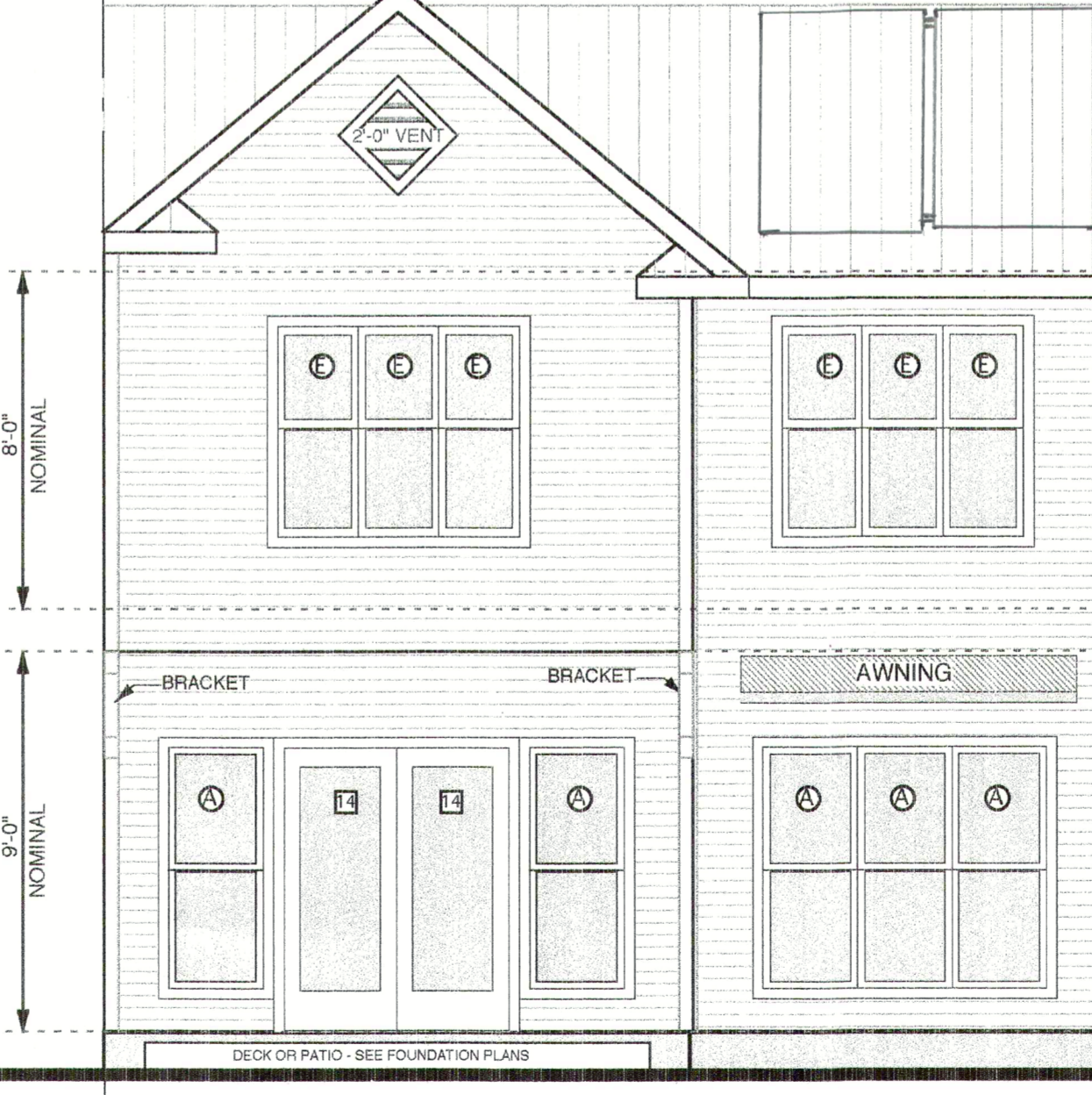
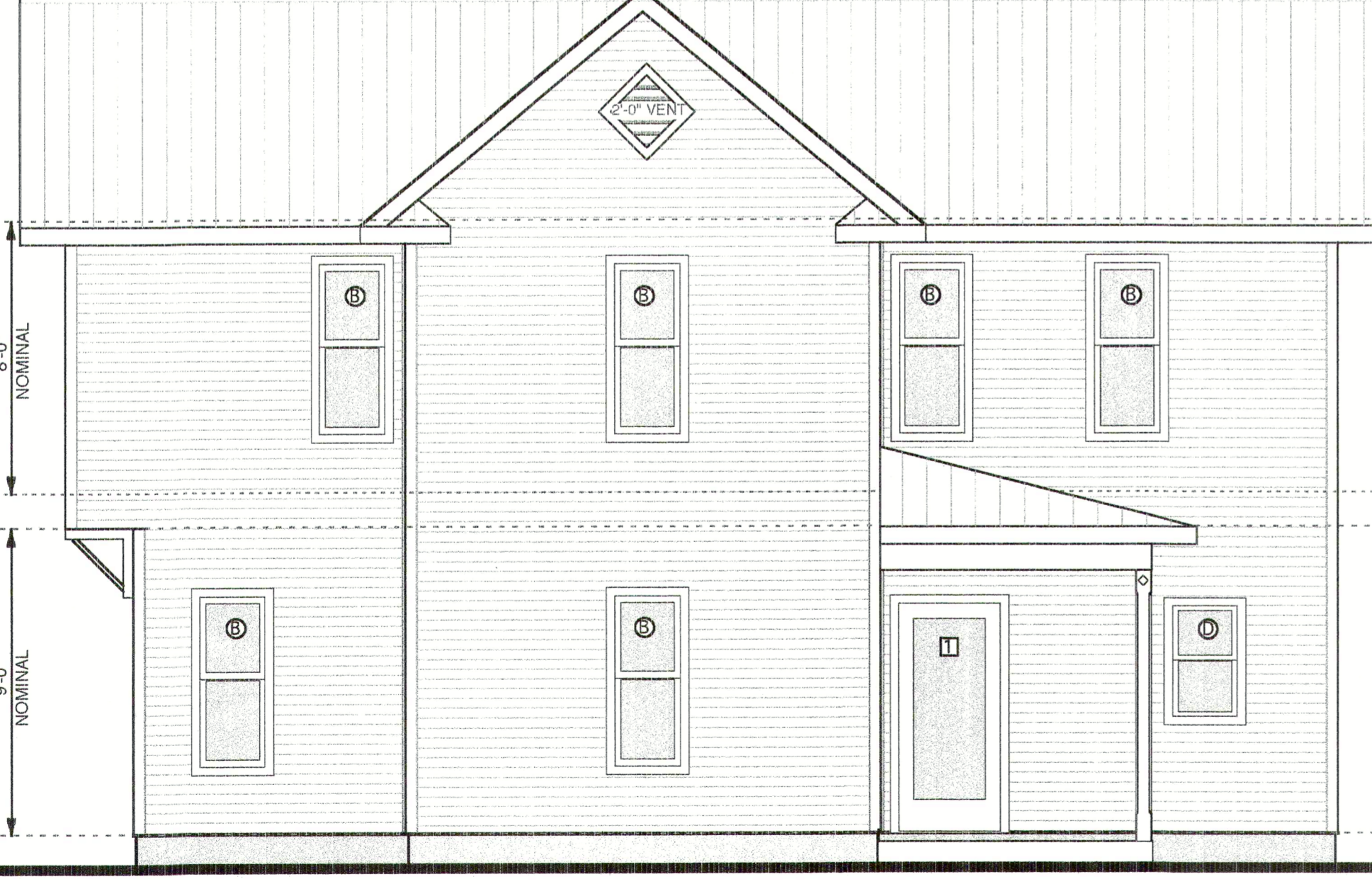
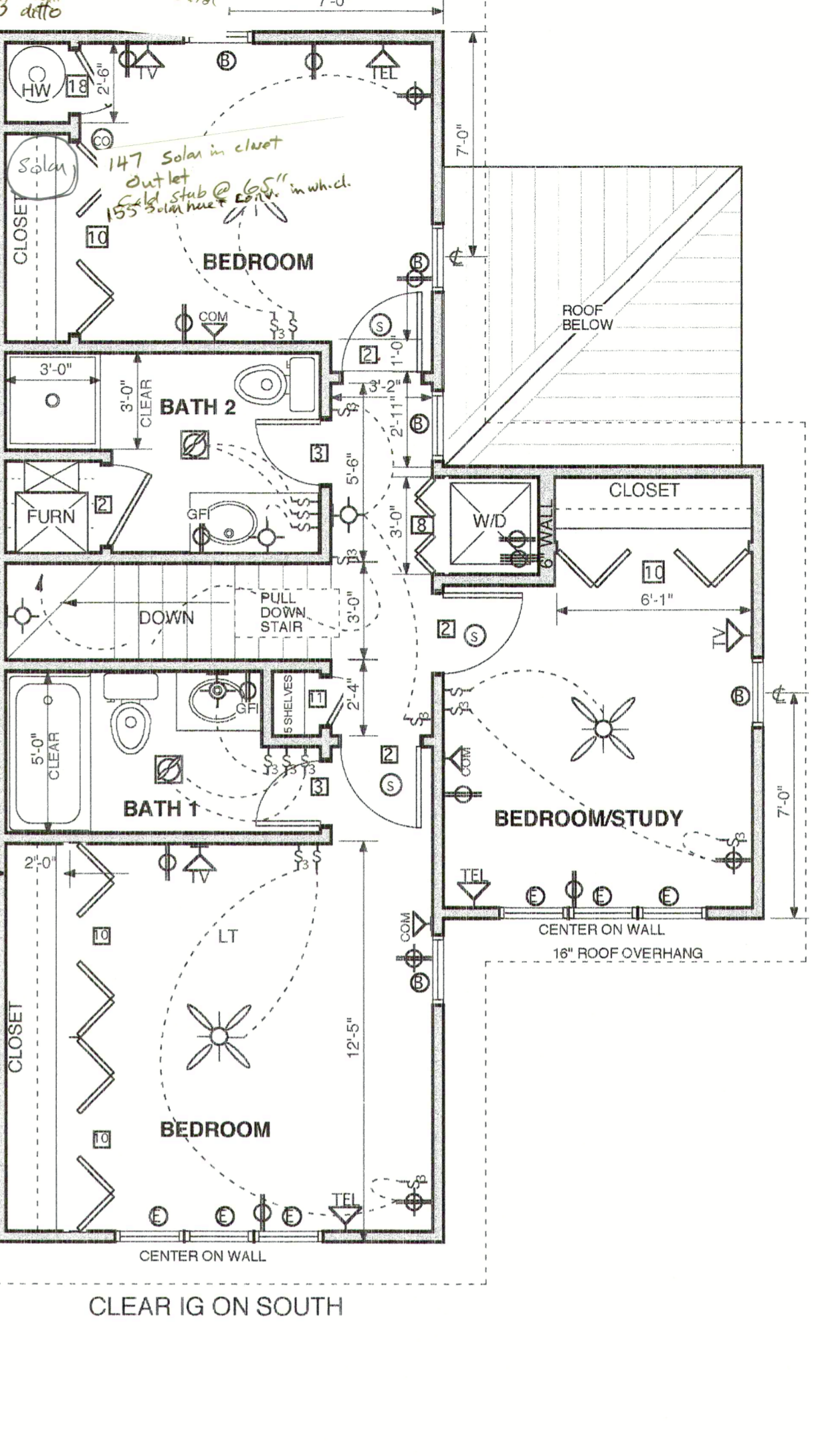
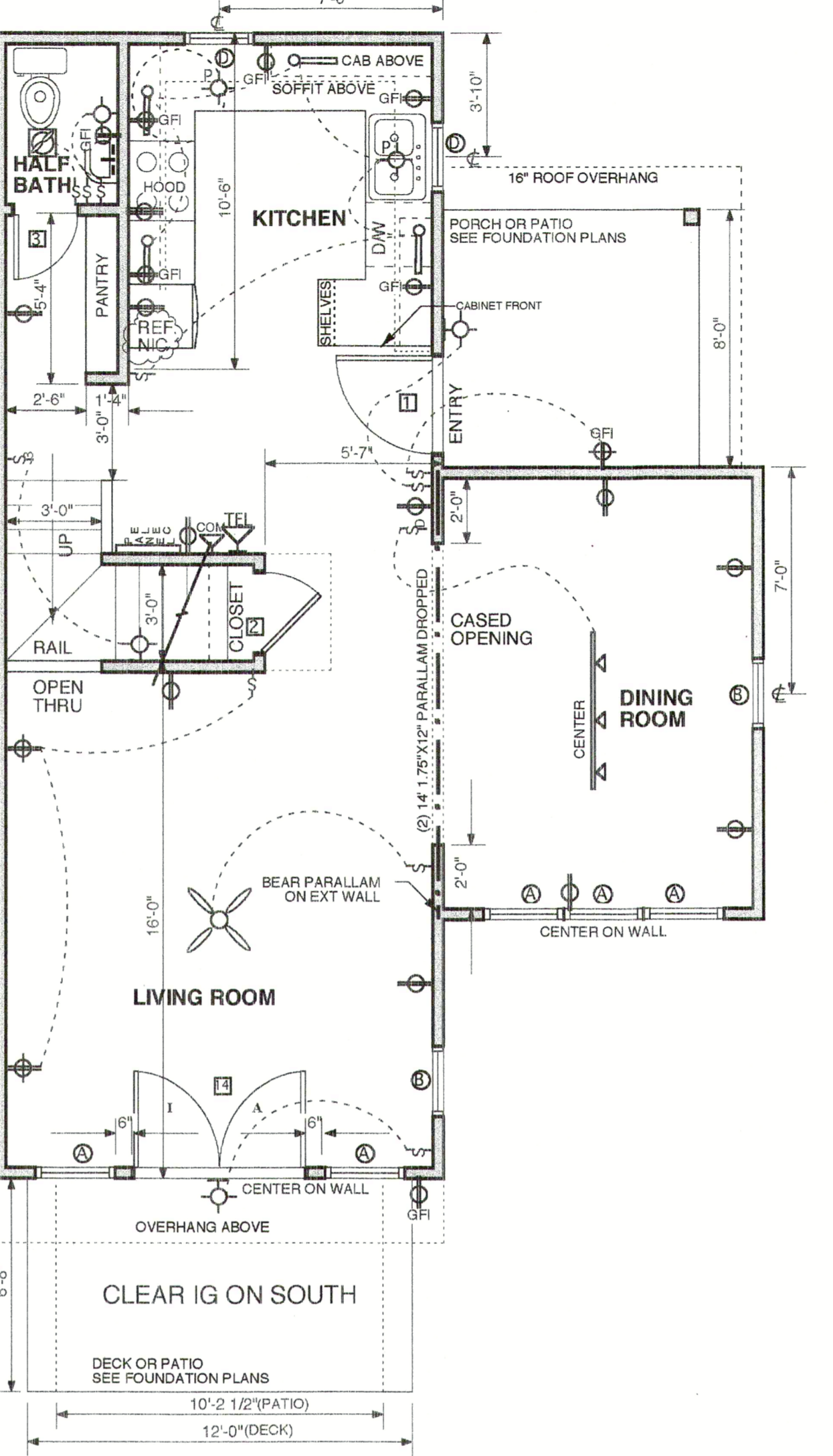
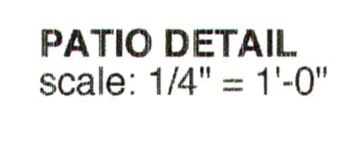
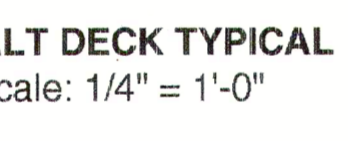
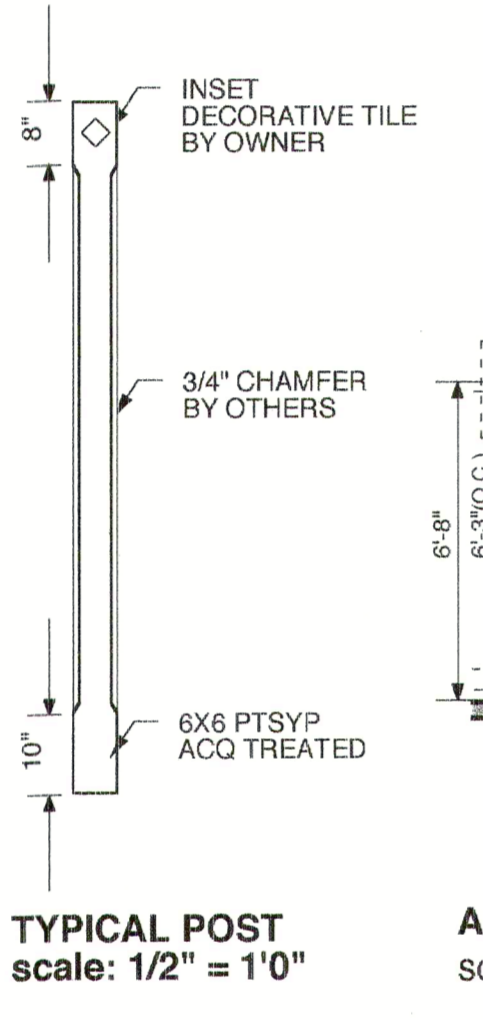
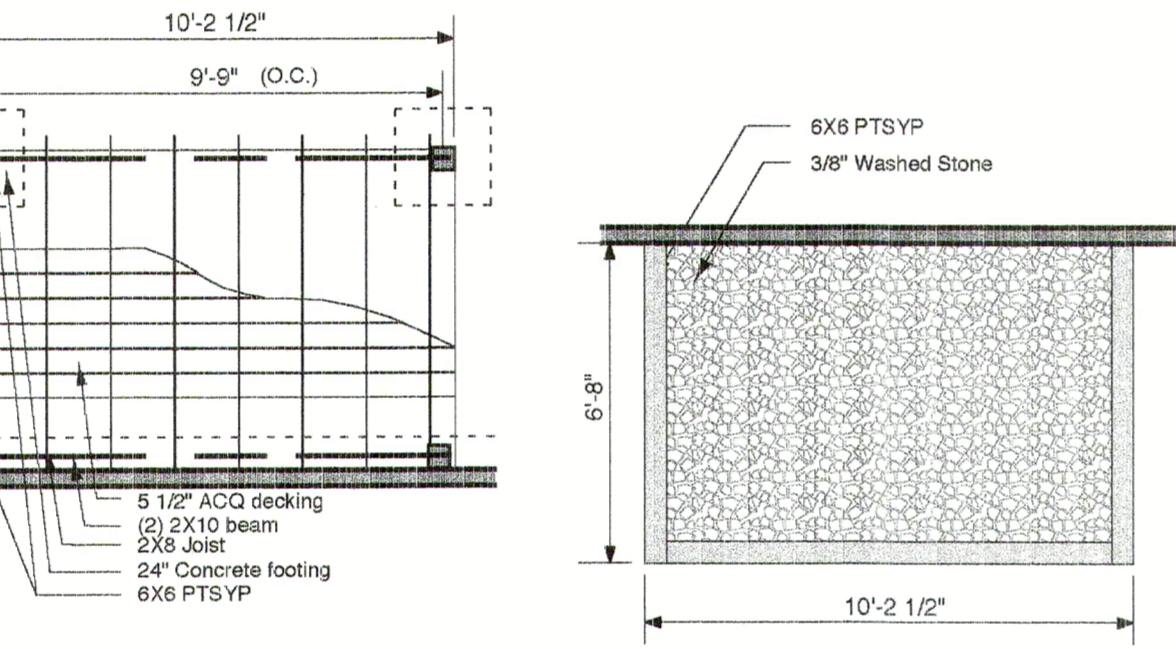
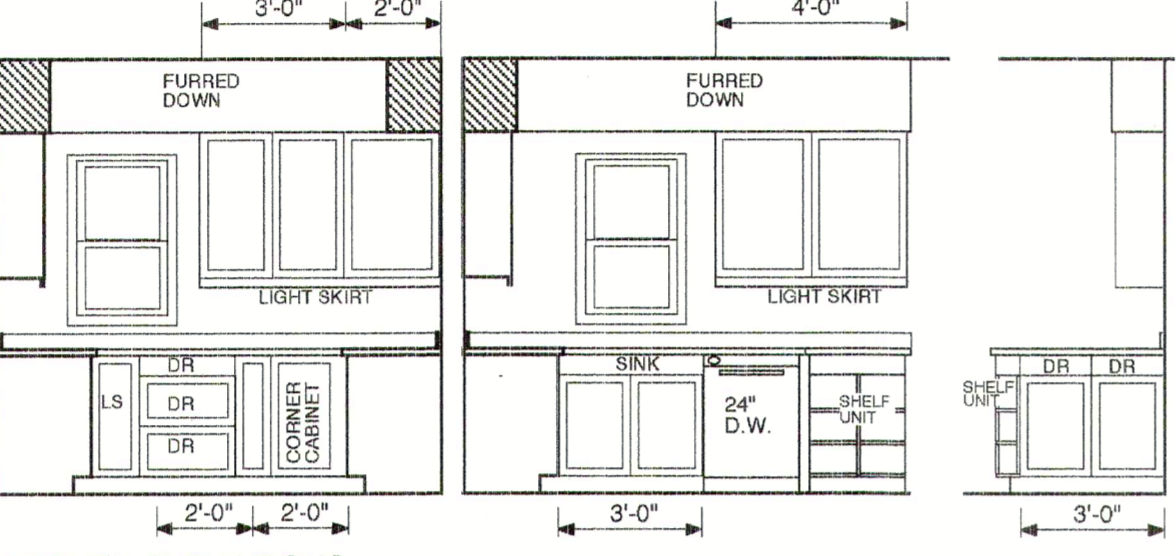
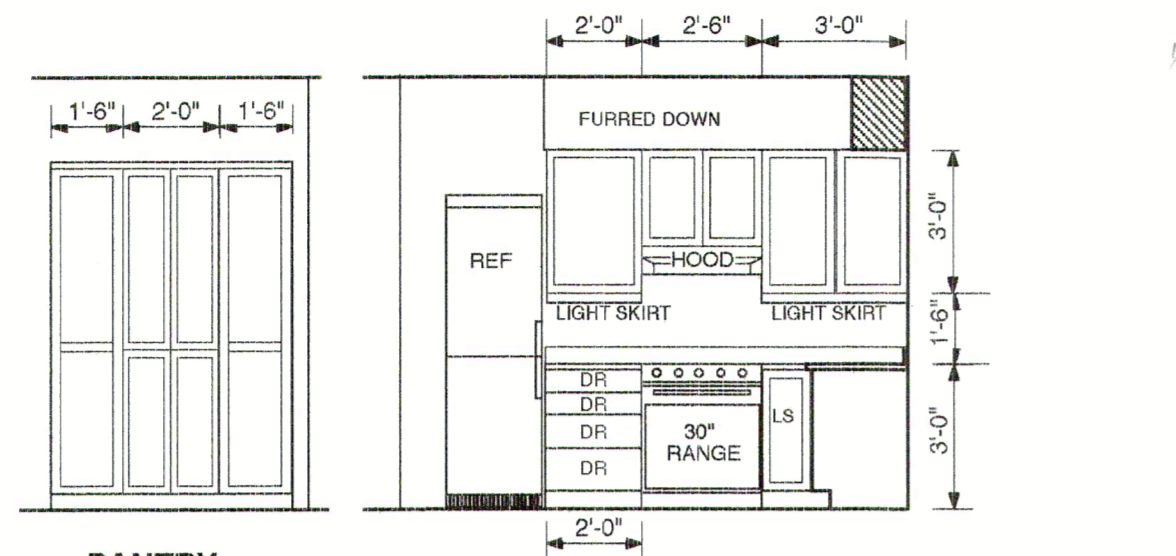
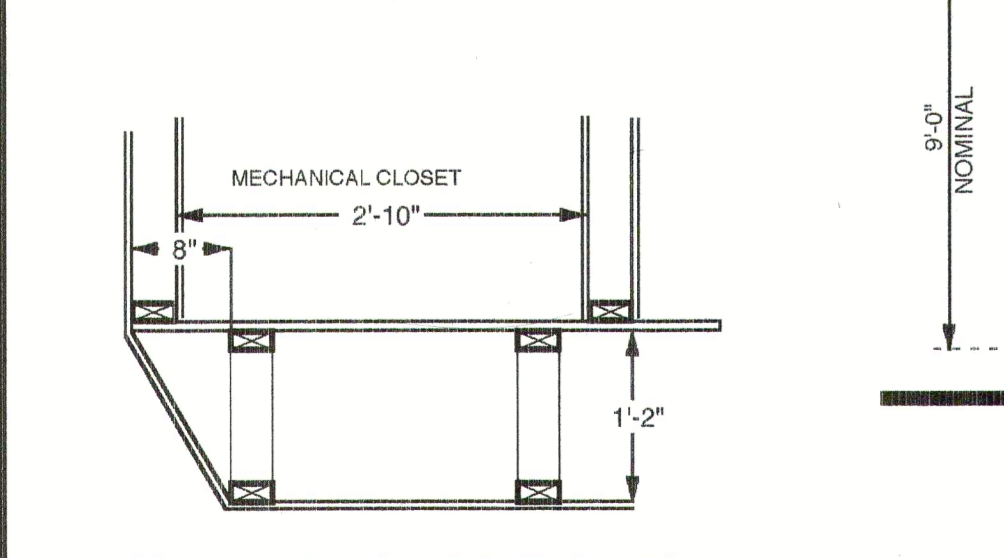
MK	TYPE	UNIT NO	MAKE	GLAZING	OPTION
1	DOUBLE HUNG	CPDH 2432	CARADCO	CLEAR IG	
2	DOUBLE HUNG	CPDH 2026	CARADCO	LOW E	
3	DOUBLE HUNG	CPDH 2020	CARADCO	LOW E	
4	DOUBLE HUNG	CPDH 2016	CARADCO	LOW E	
5	DOUBLE HUNG	CPDH 2026	CARADCO	CLEAR IG	

LOCATION	FIXTURE	MAKE	MODEL	LAMP/TRIM
KITCHEN	UNDER CAB FLUOR	SIMKAR	UW20TS-LA	20W T-12
KITCHEN	PENDANT	\$50 ALLOWANCE	ITEM TBD BY BUYER	
LIVING ROOM	CLNG FAN	\$100 ALLOWANCE	ITEM TBD BY BUYER	
DINING ROOM	TRACK	\$100 ALLOWANCE	ITEM TBD BY BUYER	
BEDROOMS	CLNG FAN LIGHT	\$150 ALLOWANCE	ITEM TBD BY BUYER	
BATHROOM	BATH FAN/LIGHT	PANASONIC	FV07 VQL2	FLUORESC 4x4
BATHROOM	WALL SCONCE	\$50 ALLOWANCE	ITEM TBD BY BUYER	
LAUNDRY	SURFACE FIXTURE	\$50 ALLOWANCE	ITEM TBD BY BUYER	
EXTERIOR	WALL MTD	VOLUME	1-1527-5	11W, C.F.
ENTRY	WALL SCONCE	\$50 ALLOWANCE	ITEM TBD BY BUYER	
STAIRWELL	WALL SCONCE	\$50 ALLOWANCE	ITEM TBD BY BUYER	
HALL	WALL SCONCE	\$50 ALLOWANCE	ITEM TBD BY BUYER	
SCREEN PORCH	CLNG FAN LIGHT	\$150 ALLOWANCE	ITEM TBD BY BUYER	

NOTE: AF/CI ON ALL BEDROOM CIRCUITS.

LOCATION	FIXTURE	MAKE	MODEL	COLOR	TRIM
BATH	TUB				
	W.C.				
	PEDESTAL SINK				
	VANITY LAV				
1/2 BATH 1300 & 1400	WALL MTD LAV	ELFE	25011	WHITE	DELTA METAL LEVER
KITCHEN	KITCHEN SINK	POLAR	DOUBLE BOWL S.S.		DELTA METAL LEVER
	DISHWASHER				
	DISHWASHER				
	DISHWASHER				
	DISHWASHER				
CONSERVATION DEVICES	SHOWERHEAD	NUGAZA	CONSERVATION		1.7 GPM
	KITCHEN FAUCET	MOORE	CONSERVATION		2.2 GPM
	BATH FAUCET	MOORE	CONSERVATION		1.0 GPM
	AREA TUB	MOORE	CONSERVATION		
OPTIONS	GARDEN TUB	NEPTUNE	VERA BATH-TUB	TBD BY BUYER	TBD BY BUYER
	SHOWER				DELTA METAL LEVER

Electrical Symbols	
TRACK LIGHT	CEILING FAN LIGHT
DUPLEX RECEPTACLE	SWITCH
SWITCHED RECEPT.	3 WAY SWITCH
220 RECEPTACLE	DIMMER SWITCH
SURFACE LIGHT	TELEPHONE
PENDANT LIGHT	TELEVISION
WALL LIGHT	FLUORESCENT
RECESSED CAN	SMOKE DETECTOR
EYEBALL CAN	COMPUTER
FAN LIGHT	CO DETECTOR
CEILING FAN	FLOOD LIGHT

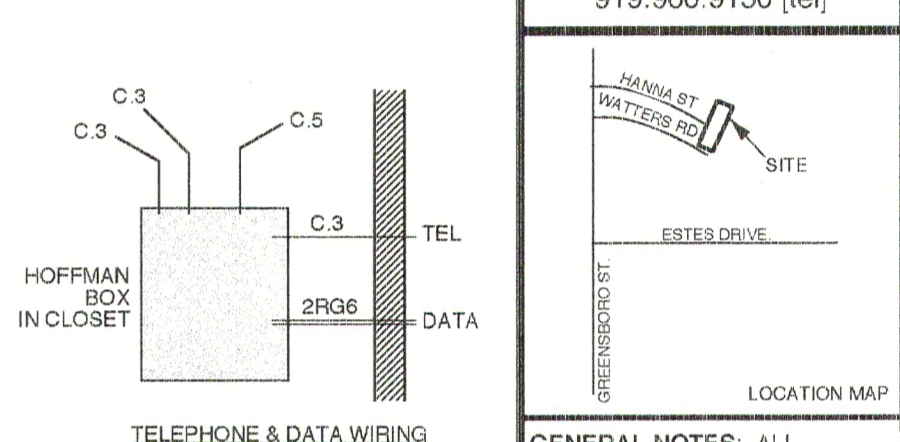


Architect
BLUNDEN PIESSE ARCHITECTS
 103 West Weaver Street
 Carboro NC 27510
 919.967.8505 [tel]
 919.942.1881 [fax]
 blunden@mindspring.com

Owner
GREEN EQUITY, LLC
 312 Ridge Road
 Durham NC 27705
 919-402-0043 [tel]

Developer
CARRBORO COLLABORATIVE DEVELOPMENT ASSOCIATION
 103 West Weaver Street
 Carboro NC 27510
 919.967.8505 [tel]
 919.942.1881 [fax]

Civil Engineer
ROBERT JOYNER, P.E.
 100 Purple Leaf Place
 Carboro NC 27510
 919.960.9150 [tel]



GENERAL NOTES: ALL CONSTRUCTION, INCLUDING STRUCTURAL DETAILS, MUST CONFORM TO N.C. STATE BUILDING CODES AND SUPERSEDE ANY NOTES IN THESE DRAWINGS.

DO NOT SCALE DRAWINGS FOR CONSTRUCTION.

CONTACT THE ARCHITECT REGARDING ANY DIMENSIONAL INCONSISTENCIES.

ALL DIMENSIONS SHOWN ARE TO RUGH FRAME SURFACE UNLESS OTHERWISE NOTED.

ROUGH CEILING HEIGHT IS 1 1/2" MORE THAN NOMINAL DIMENSION.

FINISH DOOR AND WINDOW HEADS SHALL ALIGN EXCEPT AS NOTED.

ALL MATERIALS AND COMPONENTS MUST BE INSTALLED PER MANUFACTURER'S RECOMMENDATIONS.

NOTE: IT IS THE INTENT OF THESE PLANS AND DRAWINGS TO CONVEY A COMPLETE AND OPERABLE SYSTEM WITH ALL APPROPRIATE APPROVALS. IT IS THE RESPONSIBILITY OF THE SUBCONTRACTOR TO INCLUDE ALL RELATED COSTS IN HIS CONTRACT. A ROCK CLAUSE WILL BE INCLUDED THAT CLEARLY DEFINES "ROCK" AND ASSOCIATED COSTS.

IT SHALL BE THE RESPONSIBILITY OF THE GENERAL CONTRACTOR TO ASSUME THERE IS NO GAP IN RESPONSIBILITY BETWEEN SUBCONTRACTORS TO PROVIDE A COMPLETE AND OPERABLE JOB. ALL WORK MUST COMPLY TO ALL STATE AND LOCAL CODES AND STANDARDS.

REVISION	DATE

CONSTRUCTION DOCUMENTS

PACIFICA

1300 s.f. Unit Plan

scale as noted

sheet # **A 15** date 09.29.04

1300 S.F. UNIT PLAN

UNIT 115
 UNIT 147
 UNIT 175