

MK	TYPE	SIZE	MATERIAL	GLAZING	OPTIONS
1	EXTERIOR	3'-0" x 6'-8"	FIBERGLASS	LOW E	NO GRILLS
2	INTERIOR	2'-6" x 6'-8"	SMOOTH	N/A	SOLID CORE
3	INTERIOR	2'-0" x 6'-8"	SMOOTH	N/A	SOLID CORE
4	BI-FOLD	4'-0" x 6'-8"	WOOD LAMINATED	N/A	
5	FRENCH EXT.	(2) 2'-8" x 6'-8"	FIBERGLASS	LOW E	
6	INTERIOR	2'-4" x 6'-8"	SMOOTH	N/A	SOLID CORE
7	BI-FOLD	5'-0" x 6'-8"	WOOD LAMINATED	N/A	
8	BI-FOLD	3'-0" x 6'-8"	WOOD LAMINATED	N/A	
9	POCKET	2'-0" x 6'-8"	SMOOTH	N/A	SOLID CORE
10	BI-FOLD	6'-0" x 6'-8"	WOOD LAMINATED	N/A	
11	INTERIOR	1'-6" x 6'-8"	SMOOTH	N/A	SOLID CORE
12	EXTERIOR PATIO	2'-8" x 6'-8"	FIBERGLASS	CLEAR IG	NO GRILLS
13	EXTERIOR	2'-0" x 6'-8"	FIBERGLASS	CLEAR IG	NO GRILLS
14	FRENCH EXT.	(2) 2'-8" x 6'-8"	FIBERGLASS	CLEAR IG	NO GRILLS
15	EXTERIOR	3'-0" x 6'-8"	FIBERGLASS	CLEAR IG	NO GRILLS
16	BY-PASS	3'-0" x 6'-8"	SMOOTH	N/A	SOLID CORE
17	INTERIOR	3'-0" x 6'-8"	SOLID CORE BIRCH	N/A	WEATHER STRIPPED WITH SWEEP, THRESHOLD & KEY LOCK
18	INTERIOR	3'-0" x 6'-8"	SOLID CORE BIRCH	N/A	
19	EXTERIOR PATIO	2'-8" x 6'-8"	FIBERGLASS	LOW E	NO GRILLS

ALL EXTERIOR FIRST FLOOR DOORS WILL HAVE LOW PROFILE THRESHOLDS.

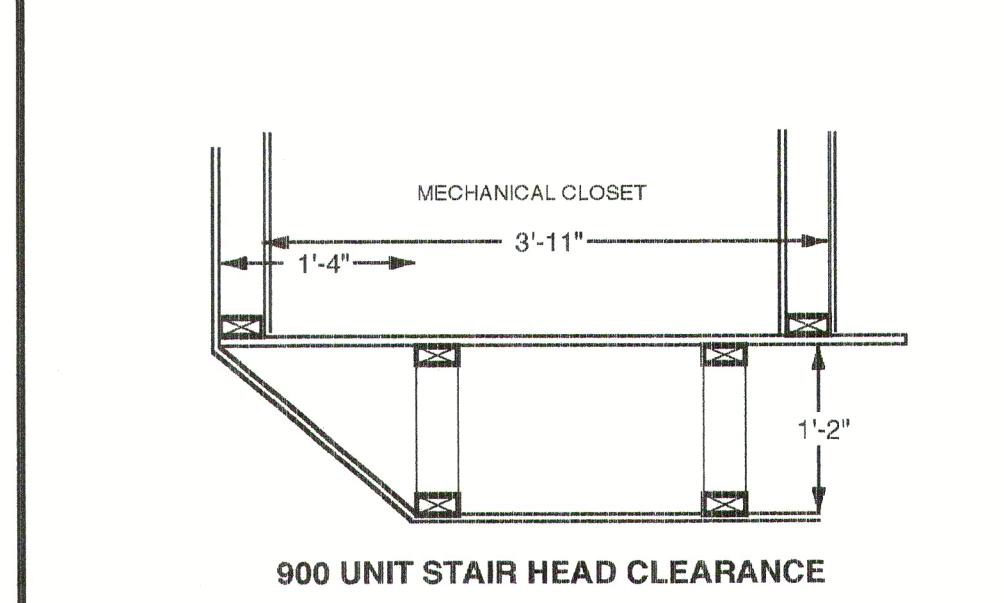
MK	TYPE	UNIT NO.	MAKE	GLAZING	OPTION
1	DOUBLE HUNG	CPDH 2432	CARADOCO	CLEAR IG	
2	DOUBLE HUNG	CPDH 2028	CARADOCO	LOW E	
3	DOUBLE HUNG	CPDH 2020	CARADOCO	LOW E	
4	DOUBLE HUNG	CPDH 2016	CARADOCO	LOW E	
5	DOUBLE HUNG	CPDH 2026	CARADOCO	CLEAR IG	

LOCATION	FIXTURE	MAKE	MODEL	LAMP/TRIM
KITCHEN	UNDER CAB FLOOR	SIMKAR	UW20TS-LA	20W T-12
KITCHEN	PENDANT	\$50 ALLOWANCE	ITEM TBD BY BUYER	
LIVING ROOM	CLING FAN	\$100 ALLOWANCE	ITEM TBD BY BUYER	
DINING ROOM	TRACK	\$100 ALLOWANCE	ITEM TBD BY BUYER	
BEDROOMS	CLING FAN LIGHT	\$150 ALLOWANCE	ITEM TBD BY BUYER	
BATHROOM	BATH FAN LIGHT	PANASONIC	FV07 V0L2	FLUORO TUBE #14.8 SWITCH CAPACITOR
BATHROOM	WALL SCONCE	\$50 ALLOWANCE	ITEM TBD BY BUYER	
LAUNDRY	SURFACE FIXTURE	\$50 ALLOWANCE	ITEM TBD BY BUYER	
EXTERIOR	WALL MTD	VOLUME	V-1027-5	11W. C.F.
ENTRY	WALL SCONCE	\$50 ALLOWANCE	ITEM TBD BY BUYER	
STAIRWELL	WALL SCONCE	\$50 ALLOWANCE	ITEM TBD BY BUYER	
HALL	WALL SCONCE	\$50 ALLOWANCE	ITEM TBD BY BUYER	
SCREEN PORCH	CLING FAN LIGHT	\$150 ALLOWANCE	ITEM TBD BY BUYER	

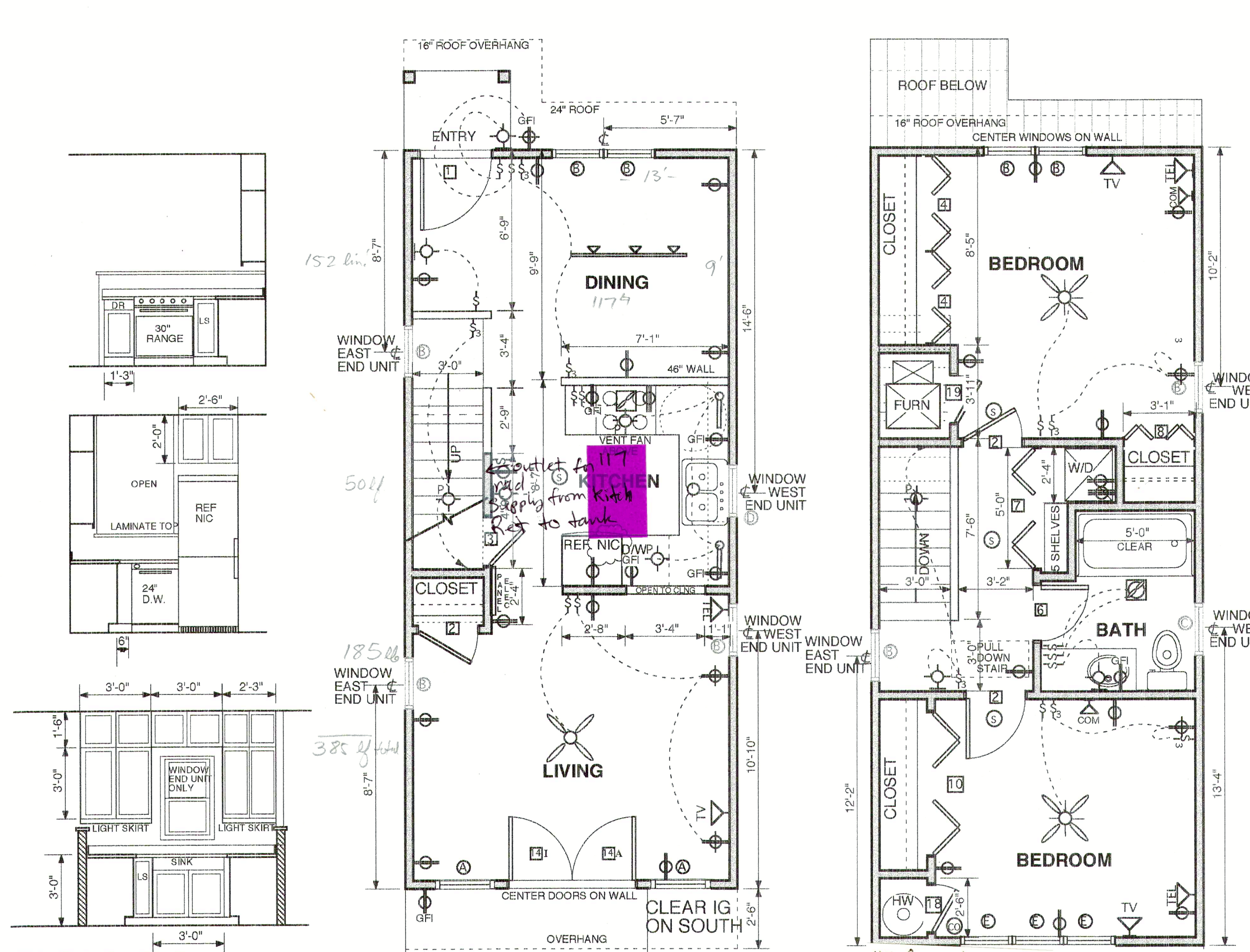
NOTE: AFPC ON ALL BEDROOM CIRCUITS.

LOCATION	FIXTURE	MAKE	MODEL	COLOR	TRIM
BATH	TUB				
	W.C.				
	PEDESTAL SINK				
	VANITY LAV				
1/2 BATH 1300 & H460	WALL MTD LAV	ELFE	5801T	WHITE	DELTA METAL LEVER
KITCHEN	KITCHEN SINK	POLAR	DOUBLE BOWL S.S.		DELTA METAL LEVER
	DISHWASHER				
	REFRIGERATOR				
CONSERVATION DEVICES	SHOWERHEAD	NIAGARA	CONSERVATION	N3010T	1.7 GPM
	WITCHEN FACET	NIAGARA	CONSERVATION	N3010T	2.2 GPM
	BATHROOM FACET	NIAGARA	CONSERVATION	N3010T	1.0 GPM
	ADD-TOG				
OPTIONS	GARDEN TUB	REPTON	NIAGARA	TBD BY BUYER	TBD BY BUYER
	SHOWER	REPTON	NIAGARA	TBD BY BUYER	TBD BY BUYER

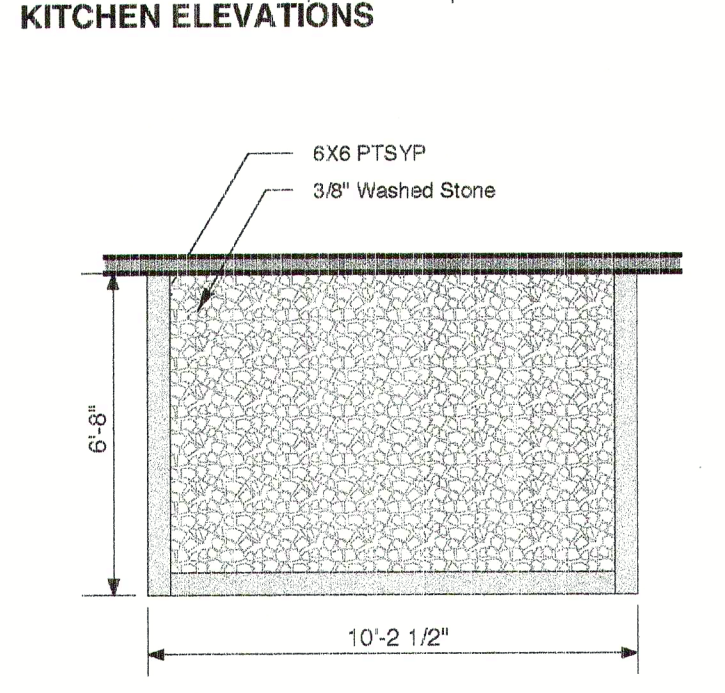
SYMBOL	DESCRIPTION	SYMBOL	DESCRIPTION
☐	TRACK LIGHT	☐	CEILING FAN LIGHT
⊕	DUPLEX RECEPTACLE	⊕	SWITCH
⊕	SWITCHED RECEPT.	3	3 WAY SWITCH
⊕	220 RECEPTACLE	⊕	DIMMER SWITCH
☐	SURFACE LIGHT	☐	TELEPHONE
☐	PENDANT LIGHT	☐	TELEVISION
☐	WALL LIGHT	☐	FLOURESCENT
☐	RECESSED CAN	☐	SMOKE DETECTOR
☐	EYEBALL CAN	☐	COMPUTER
☐	FAN LIGHT	☐	CO DETECTOR
☐	CEILING FAN	☐	FLOOD LIGHT



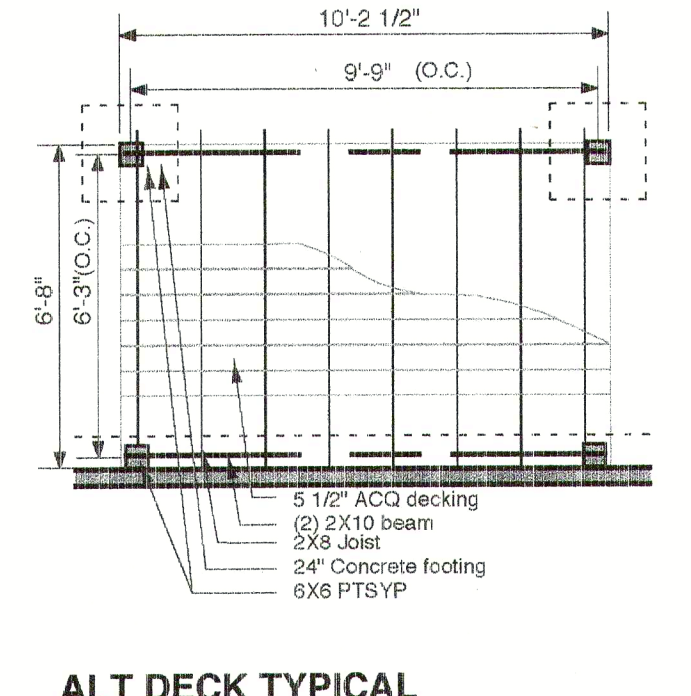
900 UNIT STAIR HEAD CLEARANCE



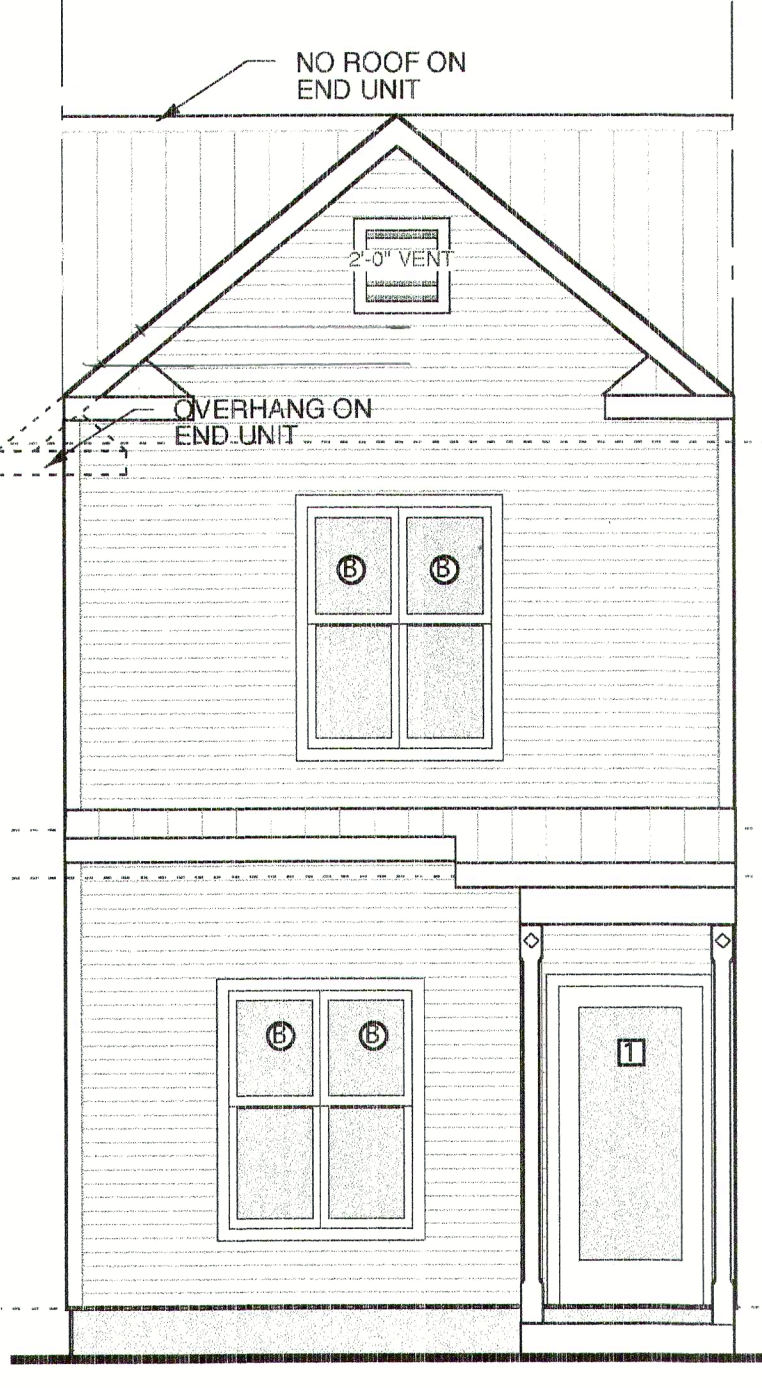
900 B - FIRST FLOOR scale: 1/4" = 1'-0"
 900 B - SECOND FLOOR scale: 1/4" = 1'-0"



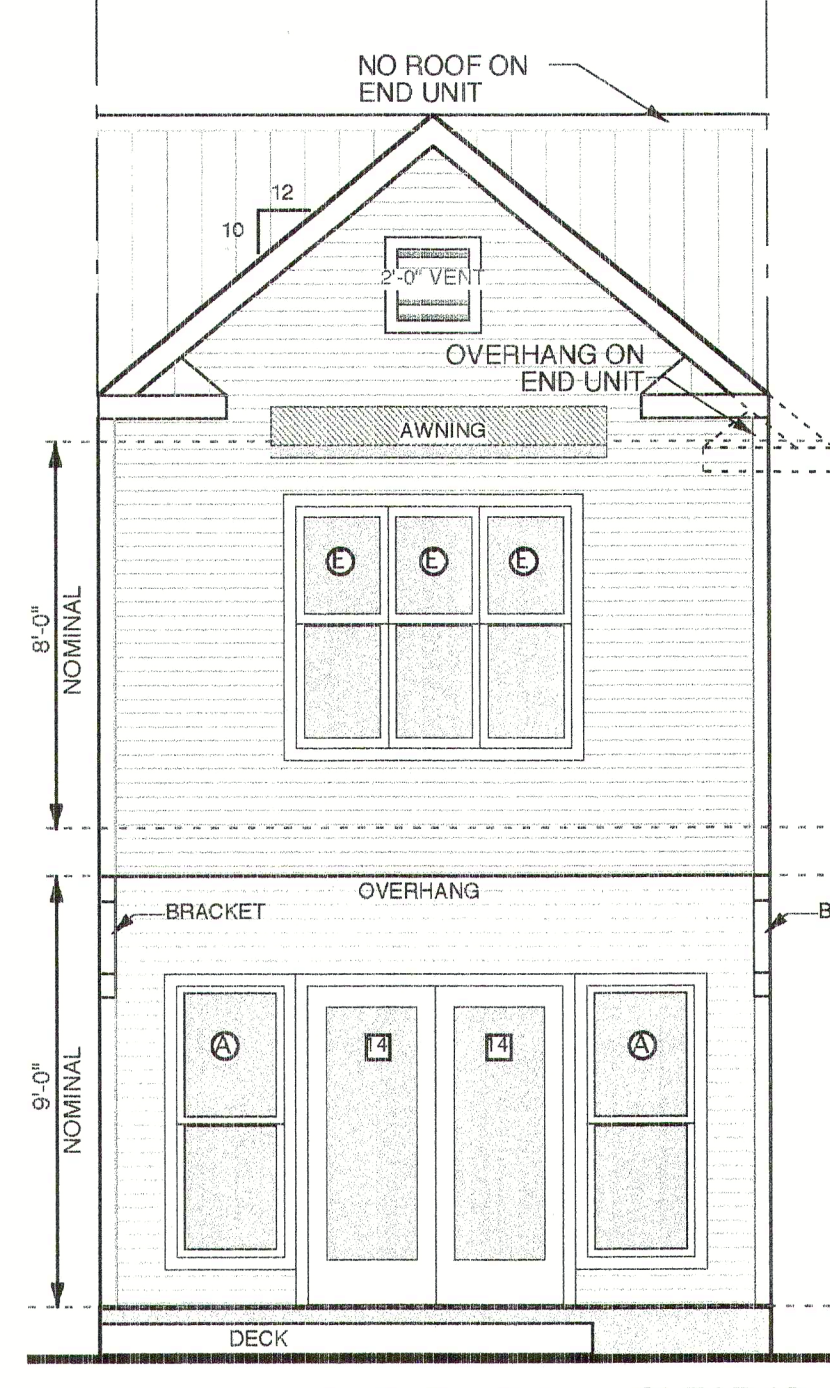
PATIO DETAIL scale: 1/4" = 1'-0"



ALT DECK TYPICAL scale: 1/4" = 1'-0"



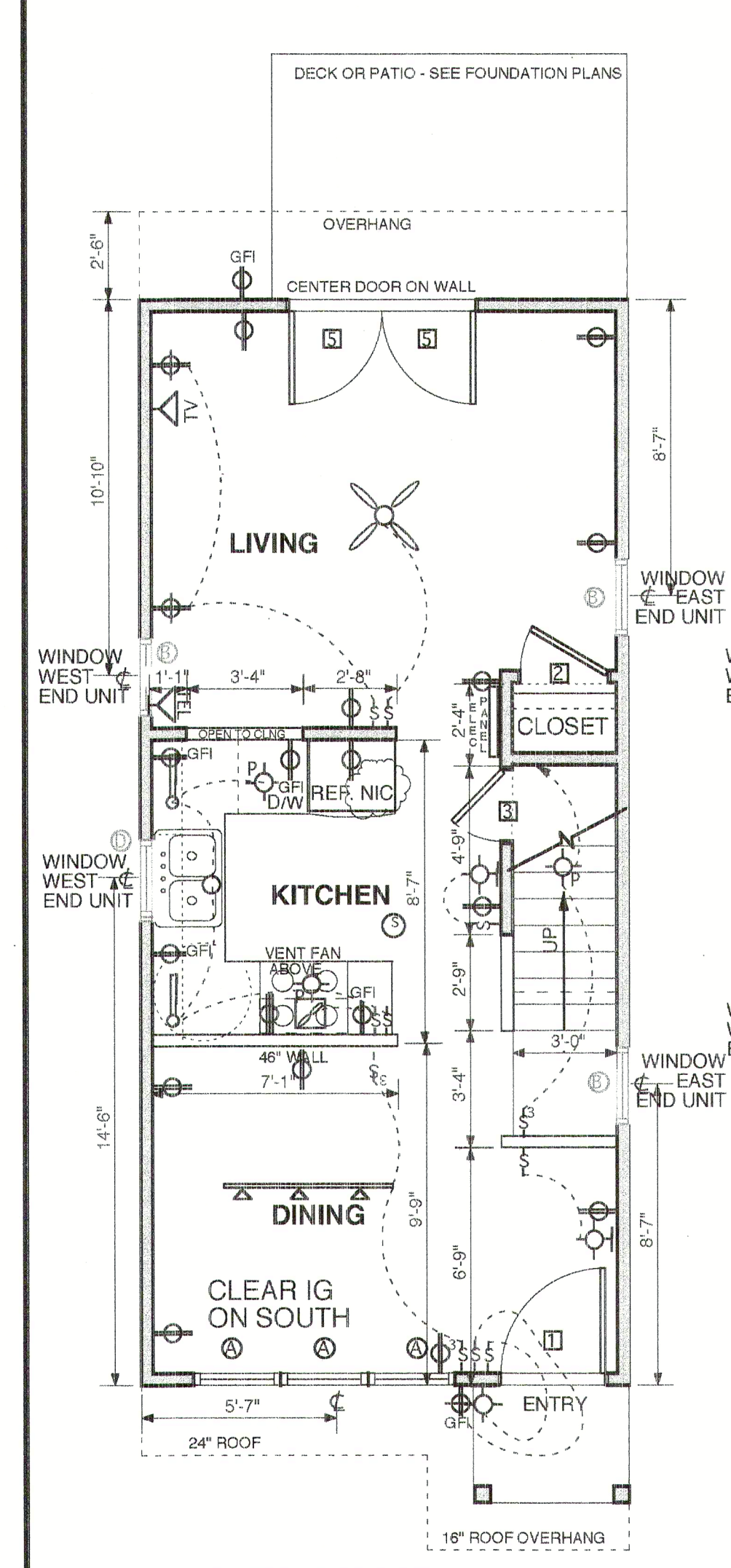
900 B - NORTH ELEVATION scale: 1/4" = 1'-0"



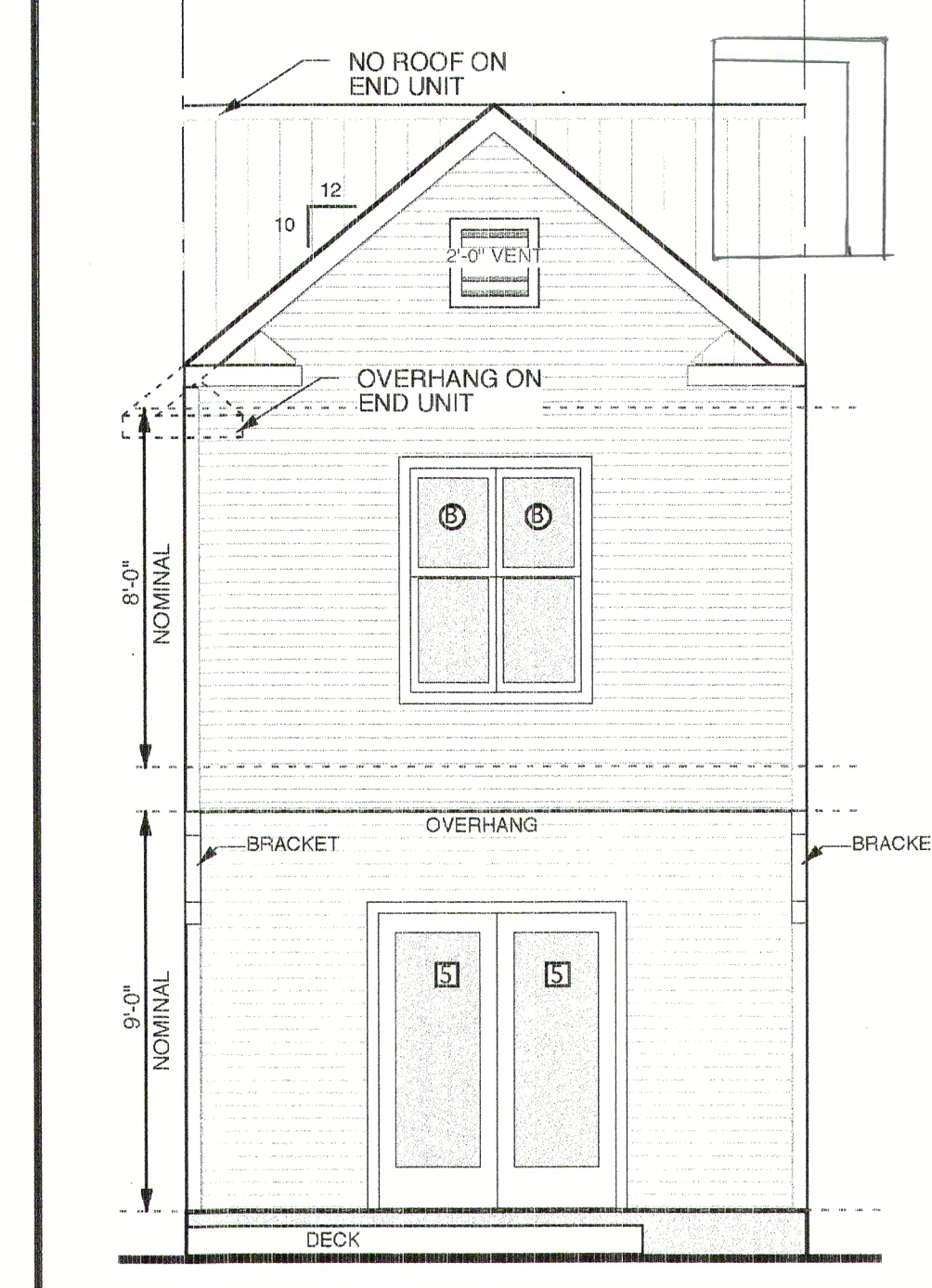
900 B - SOUTH ELEVATION scale: 1/4" = 1'-0" CLEAR IG ON SOUTH

UNIT 117 WEST END UNIT
 UNIT 161 EAST END UNIT

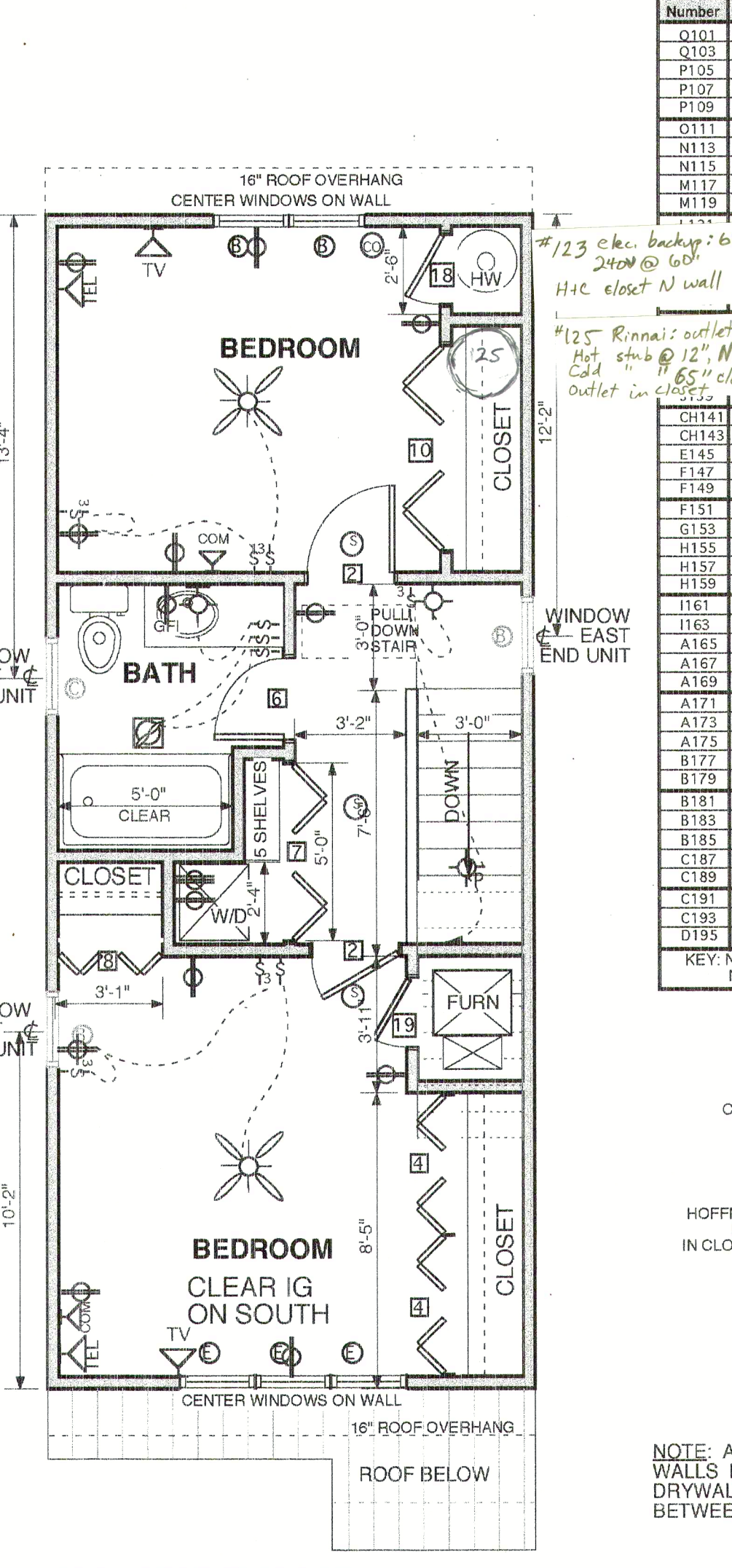
900 B NORTH END ENTRY



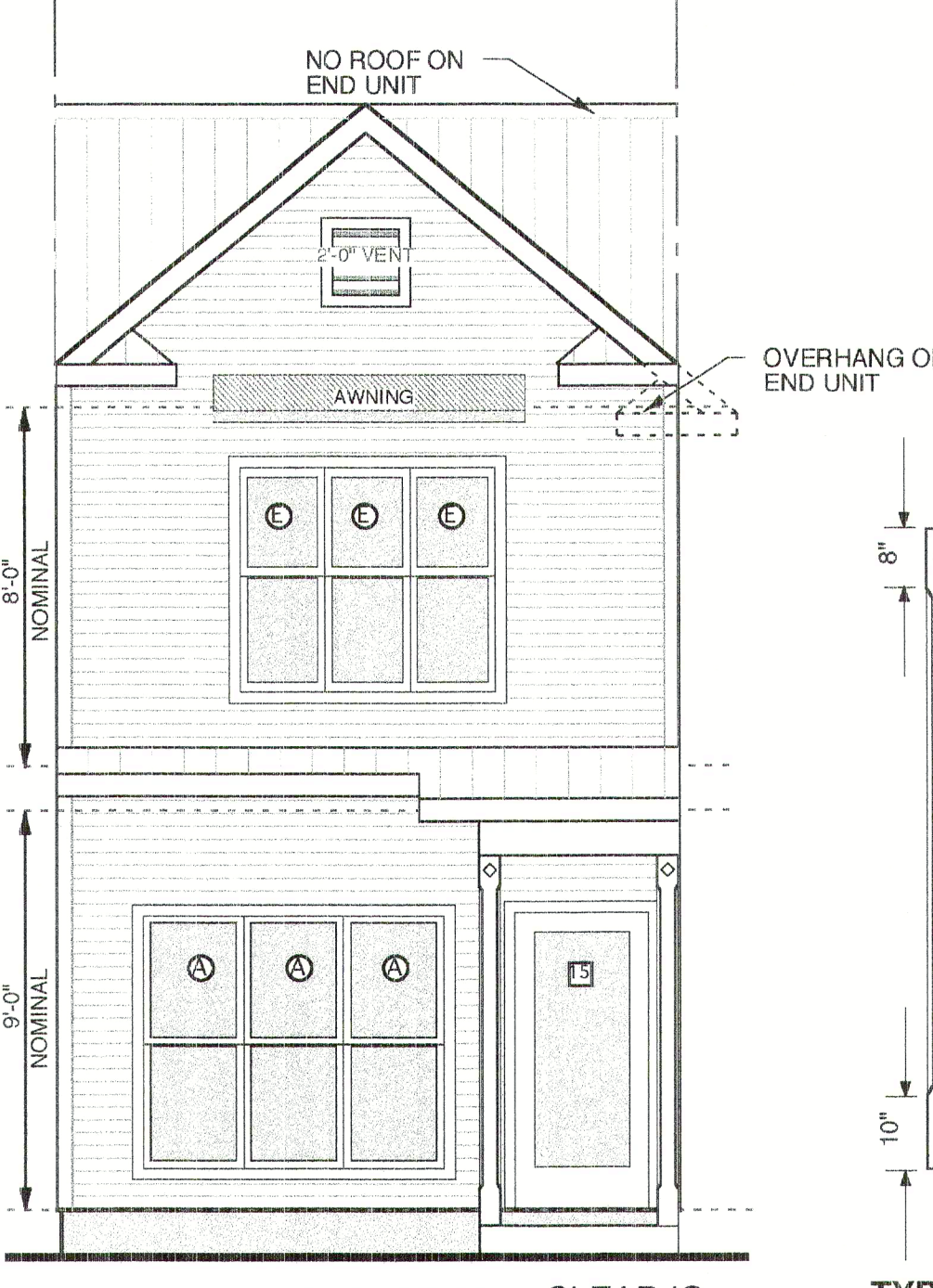
900 A - FIRST FLOOR scale: 1/4" = 1'-0"



900 A - NORTH ELEVATION scale: 1/4" = 1'-0"



900 A - SECOND FLOOR scale: 1/4" = 1'-0"



900 A - SOUTH ELEVATION scale: 1/4" = 1'-0" CLEAR IG ON SOUTH

UNIT 123 MIDDLE UNIT Lee
 UNIT 127 WEST END UNIT W. Burn
 UNIT 127 EAST END UNIT
 UNIT 131 MIDDLE UNIT
 UNIT 133 WEST END UNIT
 UNIT 139 WEST END UNIT

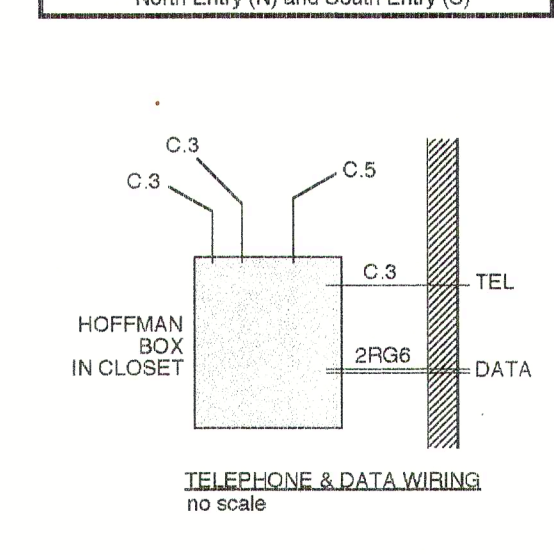
900 A SOUTH END ENTRY

UNIT 123 MIDDLE UNIT Lee
 UNIT 127 WEST END UNIT W. Burn
 UNIT 127 EAST END UNIT
 UNIT 131 MIDDLE UNIT
 UNIT 133 WEST END UNIT
 UNIT 139 WEST END UNIT

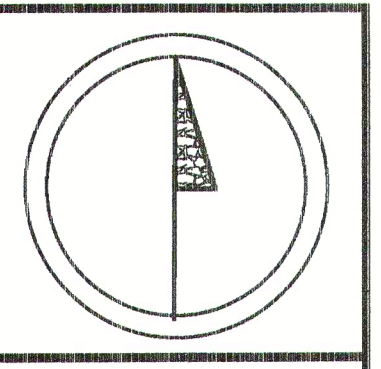
900 A SOUTH END ENTRY

Lot/Unit Number	Future Owner	House Size
Q101	Martens	1460 - N
Q103	Mingus, G.	Custom - N
P105	Wright	1100 - N
P107	Stearns	1100 - N
P109	Burnage	1460 - N
Q111	Smith & Barto	Custom - N
N113	McCollough	1100 - N
N115	Redzick	1300 - N
N117	Thomas & Newman	900 - N
M119	Simone & Felix	1460 - N
...
...
...

CH141	HOA-Common House	
F147	Corridor	1300-N
F149	Corridor & Escobar	Custom - N
F151	Escobar	1100-N
F151	Henske	1460-N
G153	Whinnant	Custom - N
H155	Carrollhouse & Kenberry	1300-N
H157	Byvassse	1460-N
H159	Carrollhouse	1100-N
H161	Carrollhouse	1100-N
A165	Carrollhouse	1106 ft. S.
A167	Carrollhouse	1460 - S.
A169	Carrollhouse	1100 - S.
A171	Carrollhouse	1106 ft. S.
A173	Carrollhouse	1460 - S.
A175	Morningstar & Winters	1300 - S.
B177	Carrollhouse	1106 ft. S.
B179	Coleman & Michaels	1460 - S.
B181	Carrollhouse	1106 ft. S.
B183	Carrollhouse	1460 - S.
B185	Morningstar & Zuckerman	1460 - S.
C187	Tremaine	610 - S.
C189	Mildes	610 - S.
C191	Walsh	610 - S.
C195	Lewis	610 - S.
D195	Pierina	Custom - S



TELEPHONE & DATA WIRING no scale



Architect

BLUNDEN PIESSE ARCHITECTS
 103 West Weaver Street
 Carrboro NC 27510
 919.967.8505 (tel)
 919.942.1881 (fax)
 blunden@mindspring.com

Owner

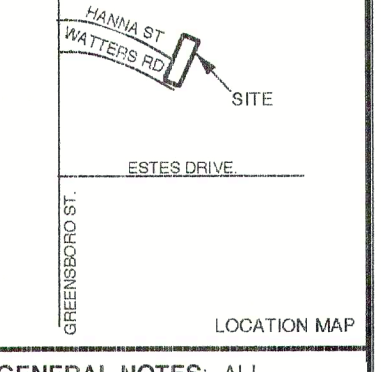
GREEN EQUITY, LLC
 312 Ridge Road
 Durham NC 27705
 919-402-0043 (tel)

Developer

CARBORO COLLABORATIVE DEVELOPMENT ASSOCIATION
 103 West Weaver Street
 Carrboro NC 27510
 919.967.8505 (tel)
 919.942.1881 (fax)

Civil Engineer

ROBERT JOYNER, P.E.
 100 Purple Leaf Place
 Carrboro NC 27510
 919.960.9150 (tel)



GENERAL NOTES: ALL CONSTRUCTION INCLUDING STRUCTURAL DETAILS MUST CONFORM TO ALL CITY BUILDING CODES AND SUPERCEDE ANY NOTES IN THESE DRAWINGS.

DO NOT SCALE DRAWINGS FOR CONSTRUCTION. CONTACT THE ARCHITECT REGARDING ANY DIMENSIONAL INCONSISTENCIES.

ALL DIMENSIONS SHOWN ARE TO ROUGH FRAME SURFACE UNLESS OTHERWISE NOTED. ROUGH CEILING HEIGHT IS 1'-1/2" MORE THAN NOMINAL DIMENSION.

FINISH DOOR AND WINDOW HEADS SHALL ALIGN EXCEPT AS NOTED.

ALL MATERIALS AND COMPONENTS MUST BE INSTALLED PER MANUFACTURER'S RECOMMENDATIONS.

NOTE: IT IS THE INTENT OF THESE PLANS AND DRAWINGS TO CONVEY A COMPLETE AND OPERABLE SYSTEM WITH ALL APPROPRIATE APPROVALS. IT IS THE RESPONSIBILITY OF THE SUBCONTRACTOR TO INCLUDE ALL RELATED COSTS IN HIS CONTRACT. A ROCKY OR ALIEN WILL BE INCLUDED THAT CLEARLY DEFINES "ROCK" AND ASSOCIATED COSTS.

IT SHALL BE THE RESPONSIBILITY OF THE GENERAL CONTRACTOR TO ASSUME THERE IS NO GAP IN RESPONSIBILITY BETWEEN SUBCONTRACTORS TO PROVIDE A COMPLETE AND OPERABLE JOB. ALL WORK MUST COMPLY TO ALL STATE AND LOCAL CODES AND STANDARDS.

REVISION DATE

CONSTRUCTION DOCUMENTS

PACIFICA

900 s.f. Unit Plan

scale as noted

sheet # A 11 date 09.29.04